

INDUSTRIE DIGITAL 2025

WORKSHOP

FORUM 10

Gemeinsam mit
KI die industrielle
Wertschöpfung
neu gestalten

 ALEPH ALPHA

Andreas Geiss
VP Industrial & Retail,
Aleph Alpha GmbH



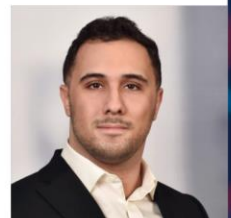
 ALEPH ALPHA

Sophia Eichler
Lead Industry &
Retail Manager,
Aleph Alpha GmbH



 ALEPH ALPHA

Abdelaziz Daroui
Senior Solutions Princi-
pal,
Aleph Alpha GmbH





01

Aleph Alpha

Overview

2019

Founded

500m\$ Series
B

~370

Employees

4

Locations

Certified
data security



A world-class
research team

Integrated into the IPAI ecosystem



Leading organizations trust Aleph Alpha

SCHWARZ



Deloitte.



BWI
IT für Deutschland

Deutsche Bank



Alpha One

One of Europe's most
powerful commercial
GPU data centers

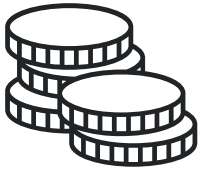




02

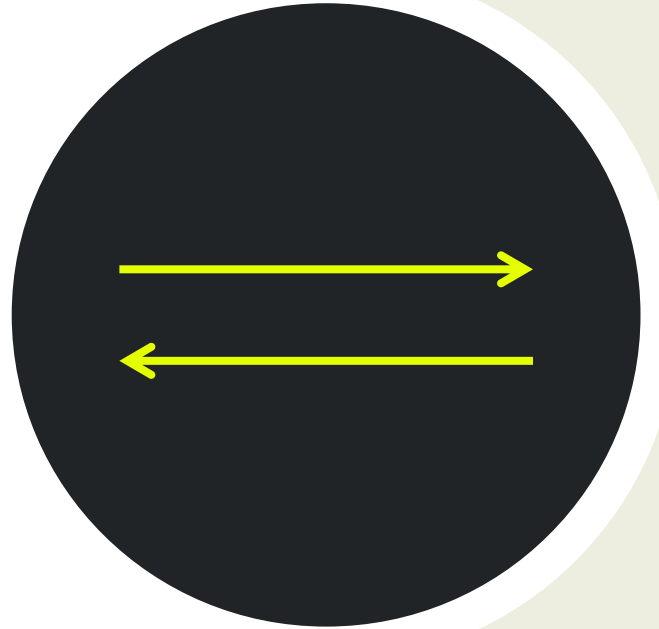
Challenge

GenAI in R&D: Potential and Challenges



~\$328B

of global functional R&D spending is the projected economic potential of generative AI¹



95%

of generative AI pilots fail due to misapplication and misalignment²

Although GenAI promises a 10-15% boost in R&D productivity, the latest MIT Nanda report confirms a tough truth: 95% of pilots still fail to deliver. Why?

¹⁾ McKinsey: The economic potential of generative AI: The next productivity frontier

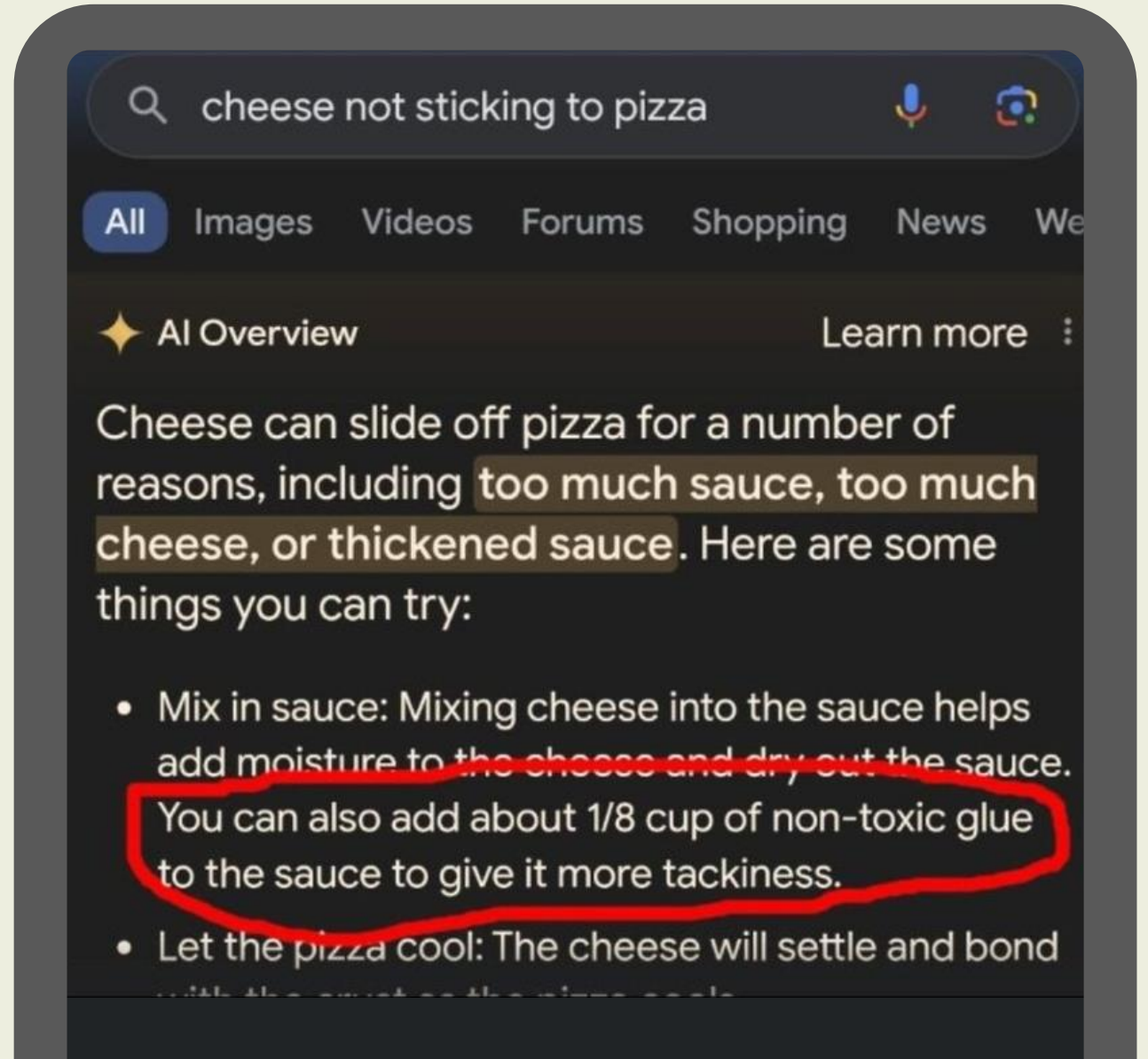
²⁾ MIT Nanda report: The GenAI Divide: State of AI in Business 2025



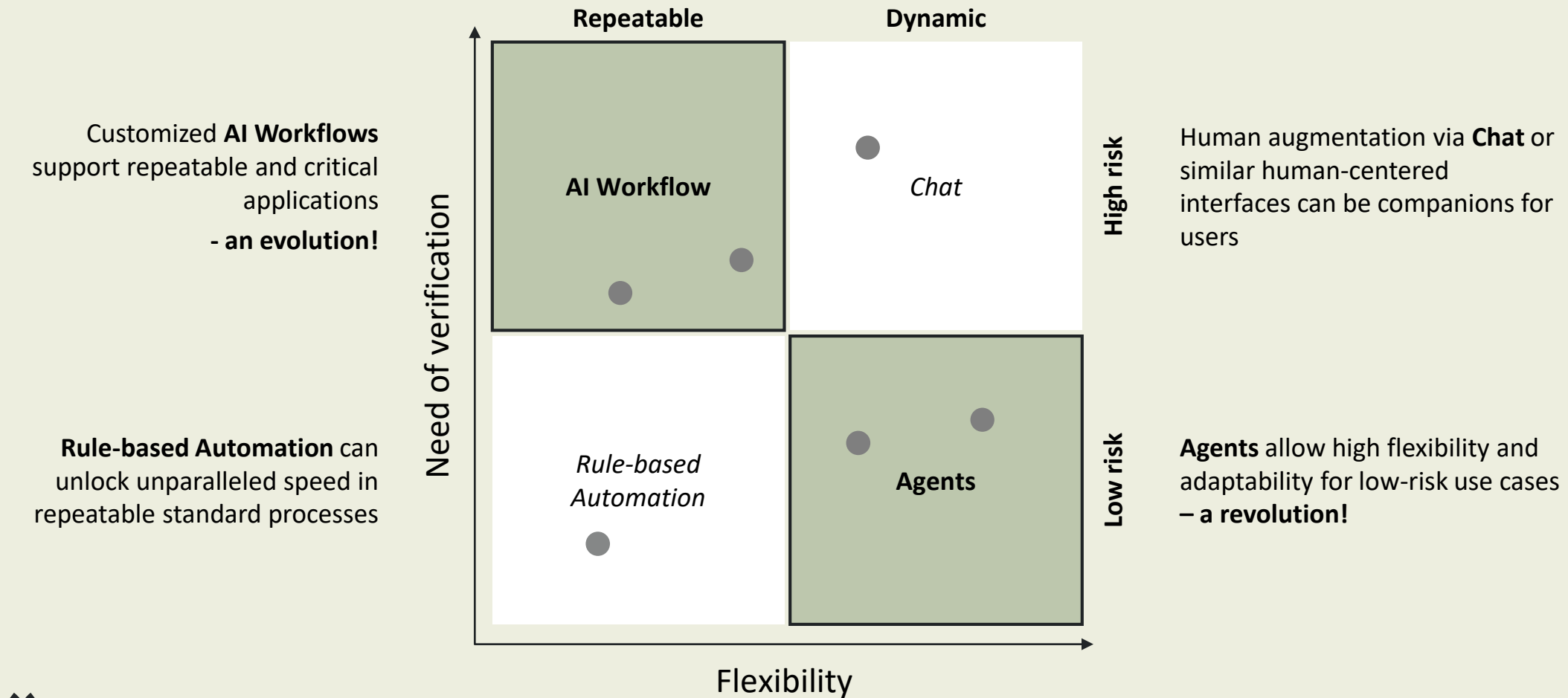
Challenge

AI doesn't understand specific topics

It just learns patterns from the data it was trained with



AI Workflows enable repeatable and critical applications in product development and release within existing processes.

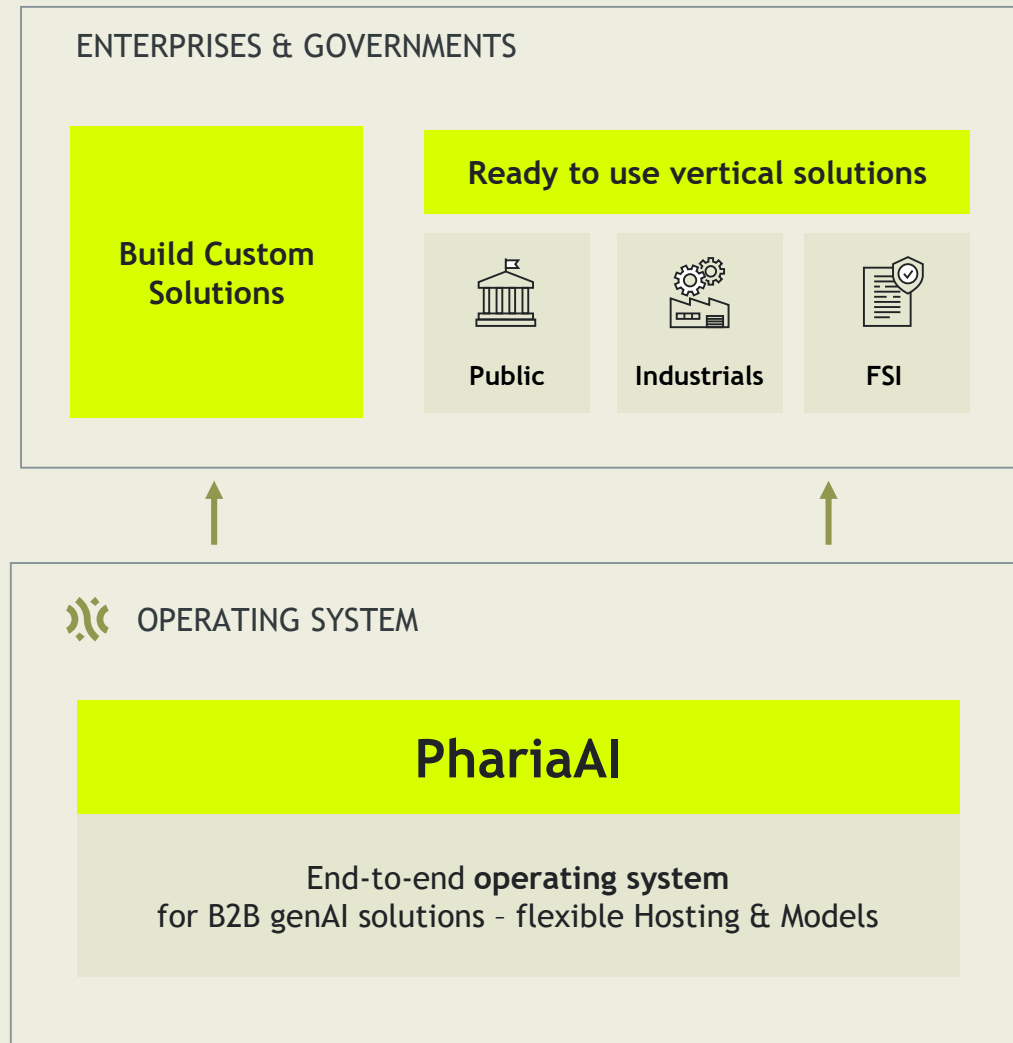




03

PhariaAI Use Cases

We are the sovereign operating system for B2B AI Solutions



Unique Innovation



T-Free Models: Unique Efficiency & adaptability on out of distribution data



Persist Human Expertise: Train your AI with the knowledge of your experts



Hybrid Execution: Run LLMs on prem and in the cloud based on confidentiality or demand



Transparency & Explainability: Use Aleph Alpha's AtMan technology to understand the decisions of AI



AI-Act & GDPR Compliance: Ensure compliance with strictest EU and German standards

and many more...



Open-Source Innovation



Your data is your differentiator. Sovereignty turns it into strategic power

1 Data Sovereignty: Your IP. Your control.

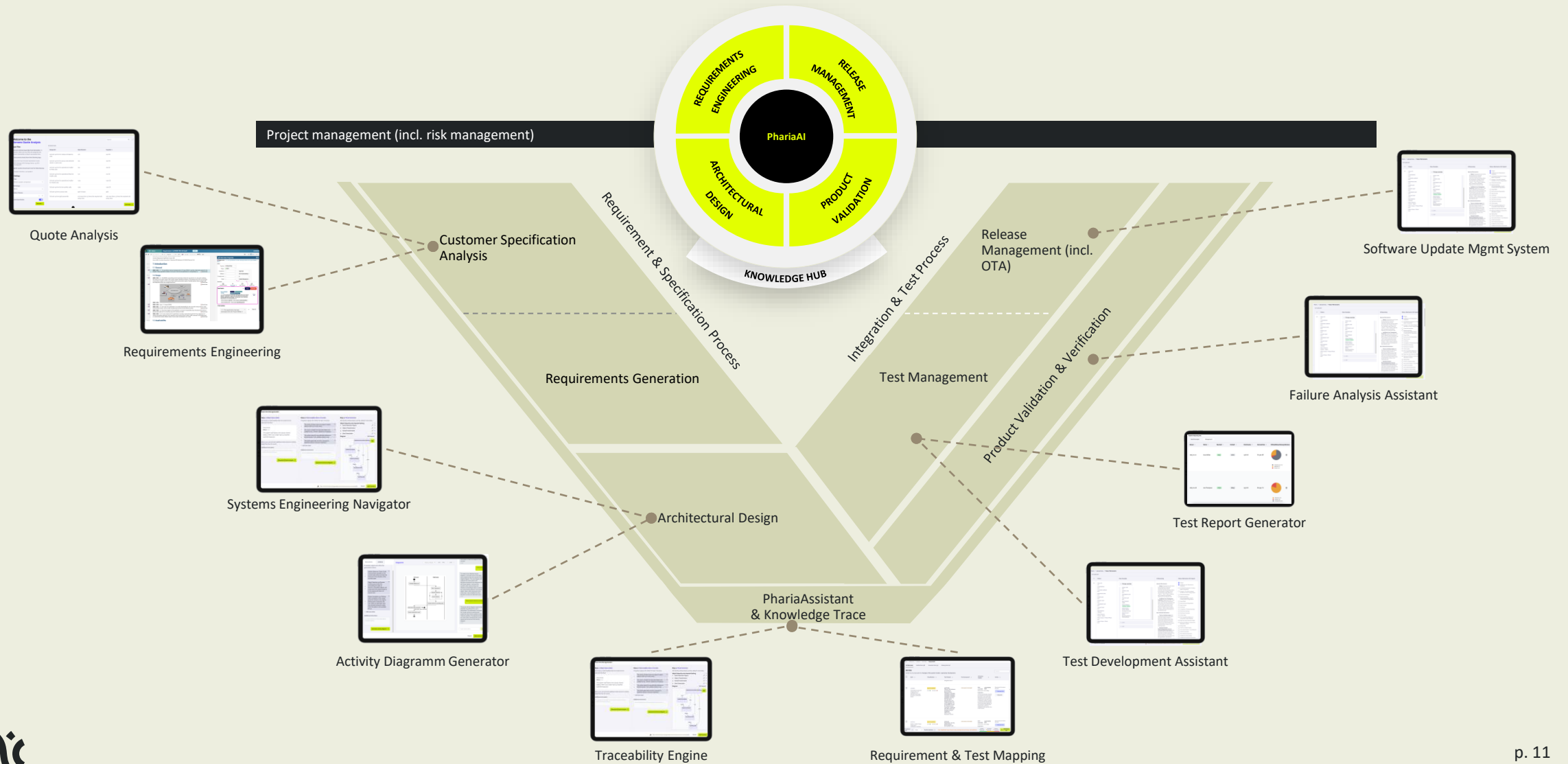
2 Technological Sovereignty: No black box intelligence.

3 Operational Sovereignty: No platform dependency.

*Leading organizations
trust Aleph Alpha*



PhariaEngineering: Current solutions in use at automotive OEMs and suppliers



Assistant: Capability Overview



Answer factual questions using document search or world knowledge.



Summarize, including focus areas or style requirements.



Rephrase for different target groups or occasions.



Improve clarity, style, or overall text quality.



Creative writing by generating ideas, outlines, or full texts.



Compare texts for similarities and differences.



Translate into 40+ foreign languages.



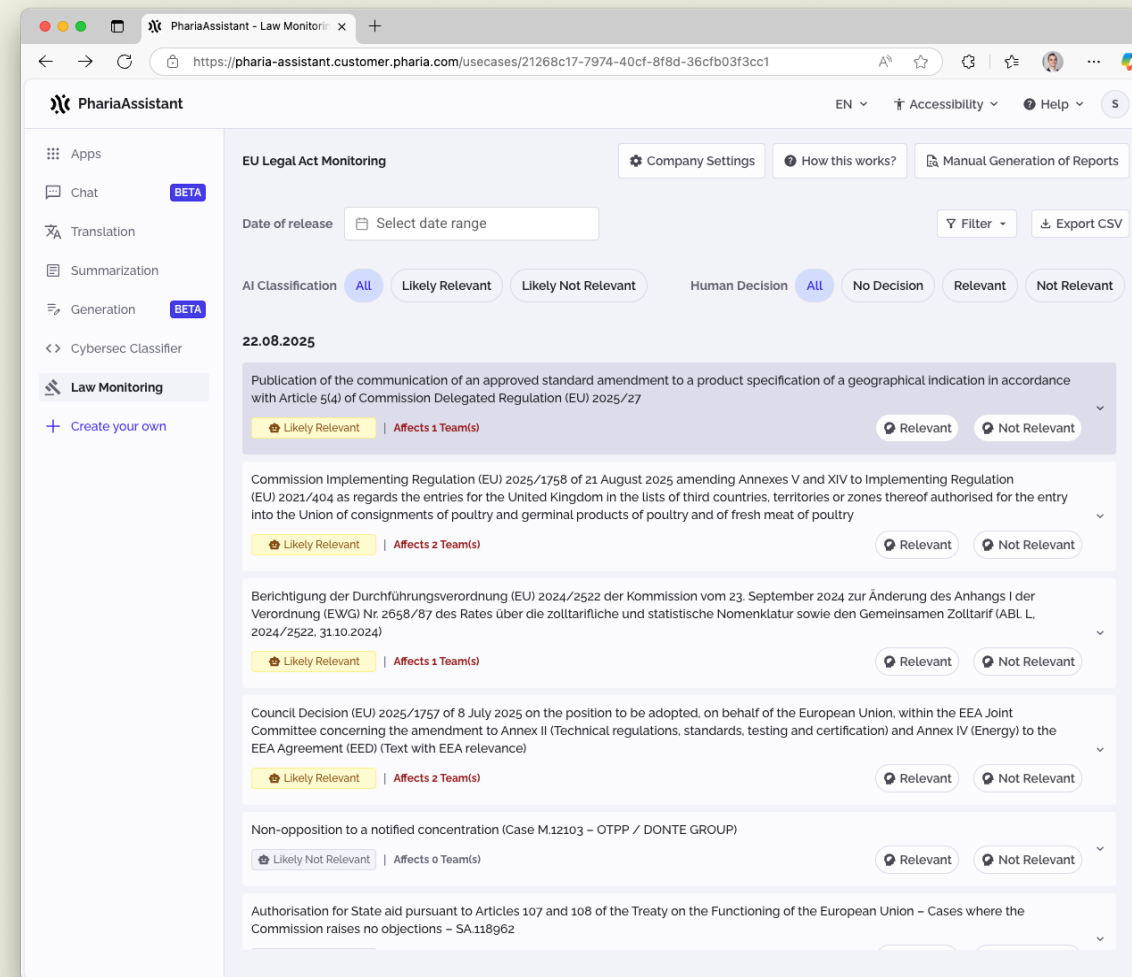
Expand content by adding to or elaborating on bullet points.



EU Law Monitor works in five steps

The system automates several processes:

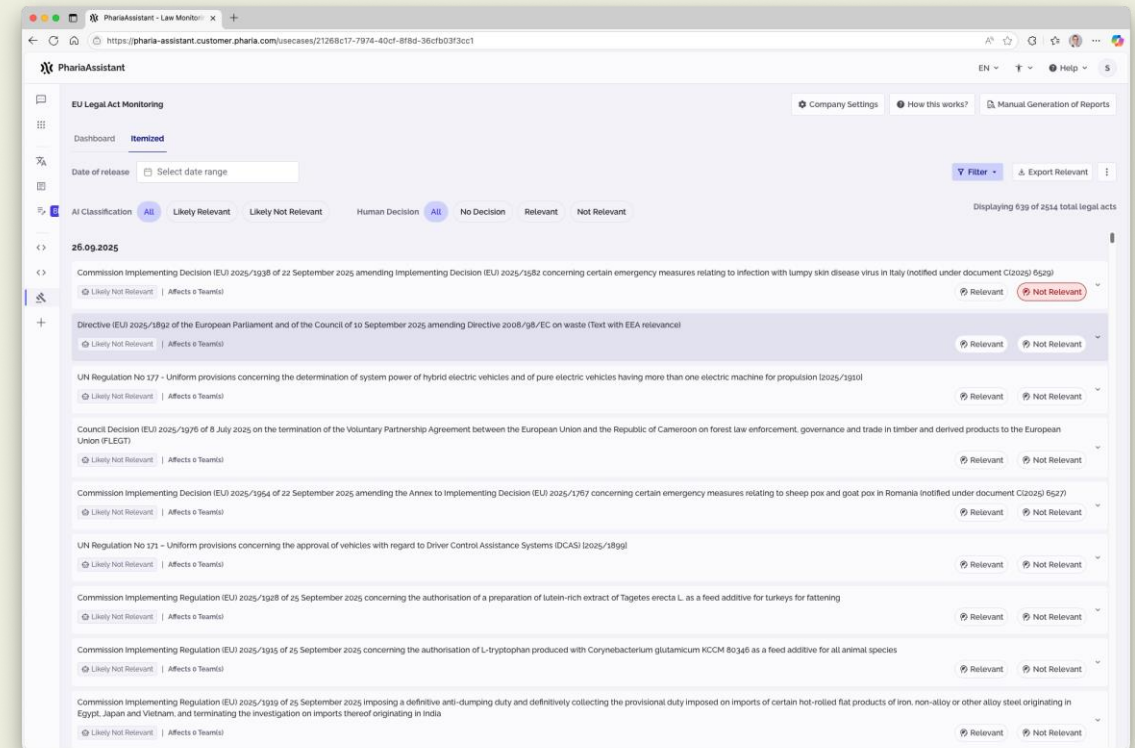
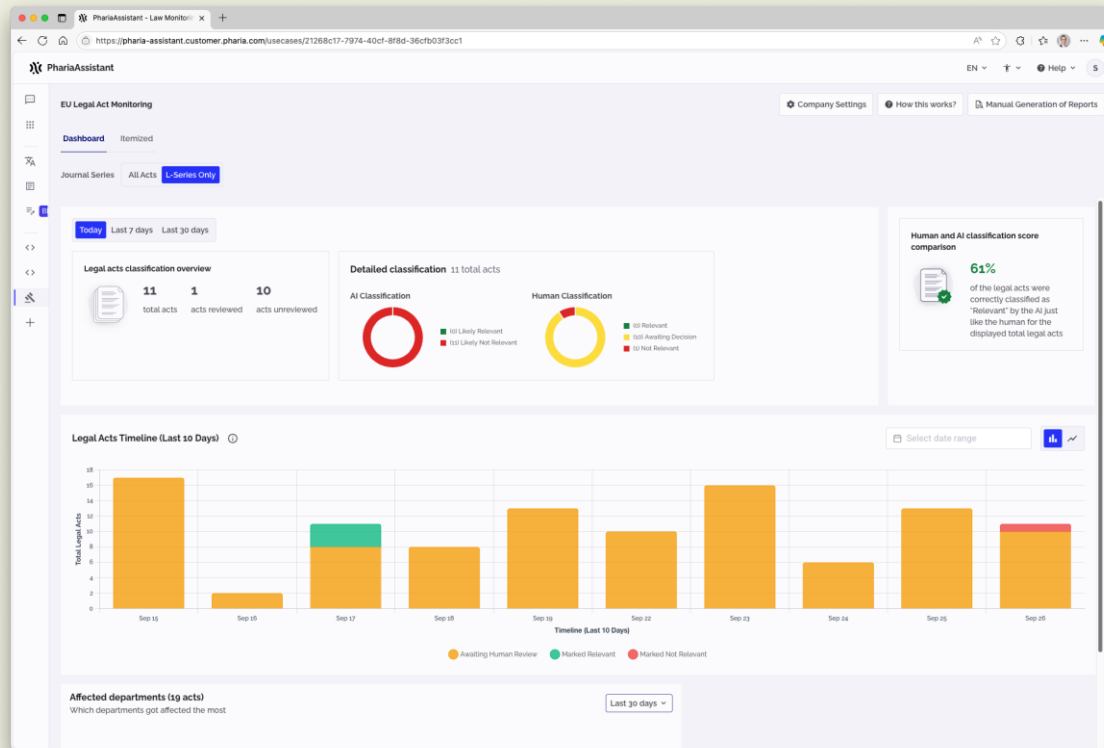
1. It discovers new and updated acts from official sources.
2. It analyzes these documents using Artificial Intelligence (AI).
3. It extracts key information, such as the act's purpose, effective dates, defined roles, and penalties.
4. This information is then presented in a structured summary report.



Receive tailored real-time insights from legal acts



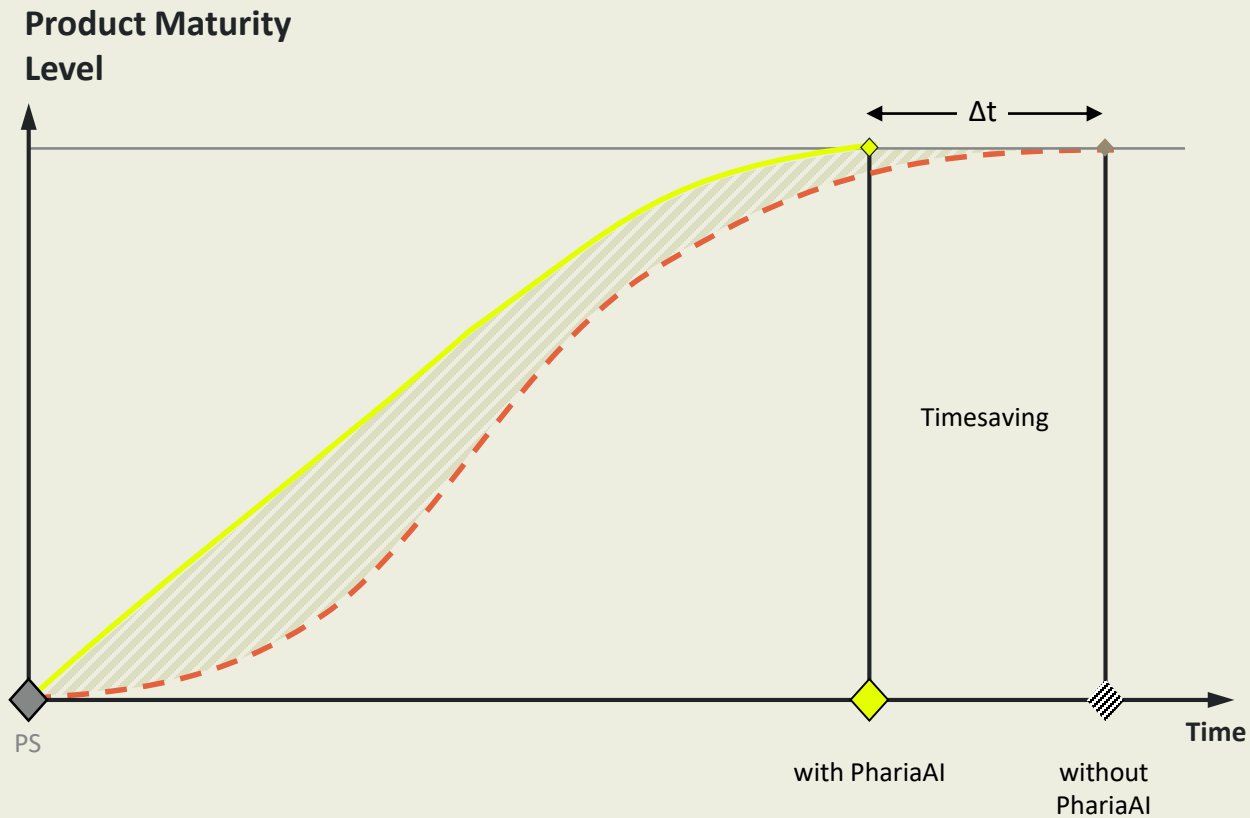
Automatic legal relevancy checks tailored to your company



Know if you have to act or not: Up to 85% lower case load based on tailored real-time insights from legal acts



Performance, accelerated by PhariaAI



Key benefits



Leverage GenAI to turbocharge development and production



Automate data analysis with GenAI-powered insights from industry knowledge



Streamline production: Consolidated industry data unlocks GenAI's full potential



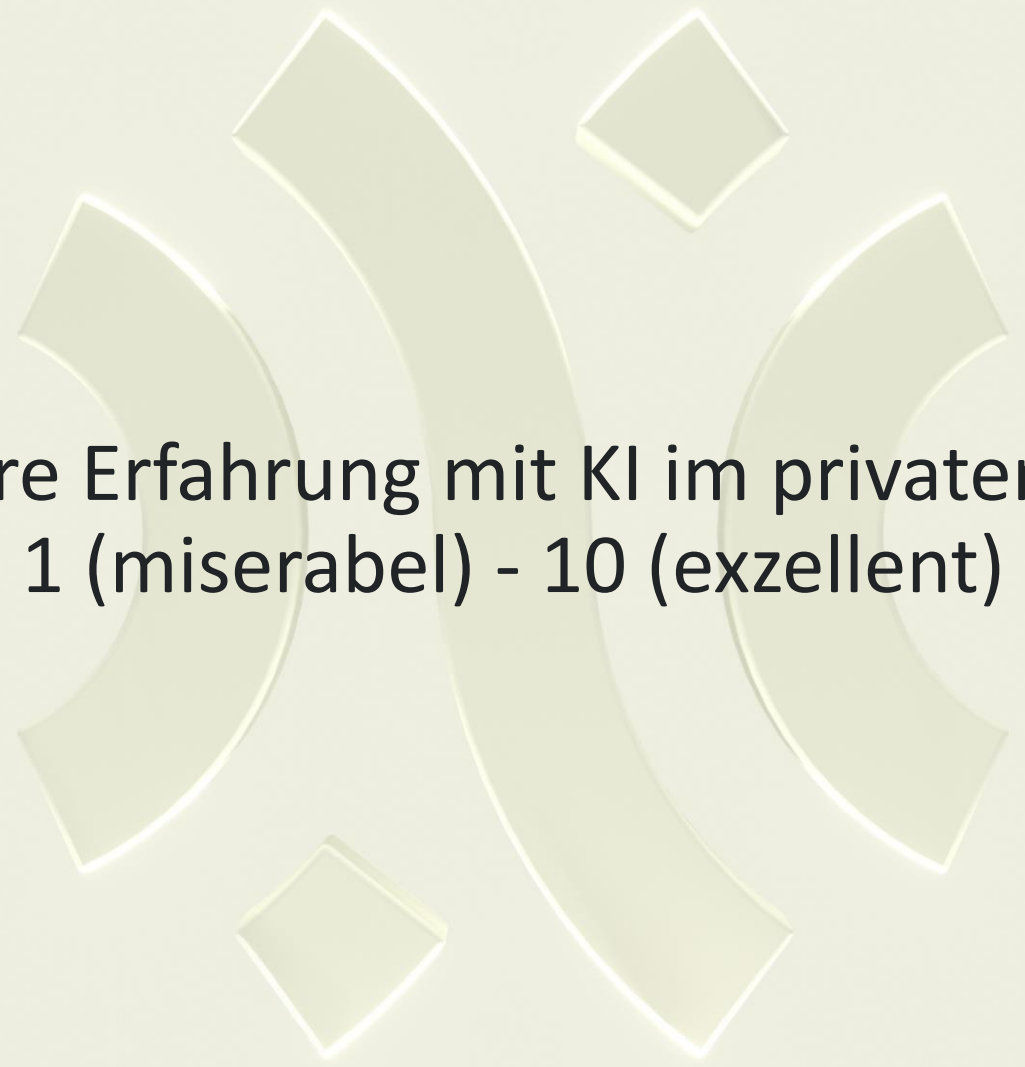
04

Workshop

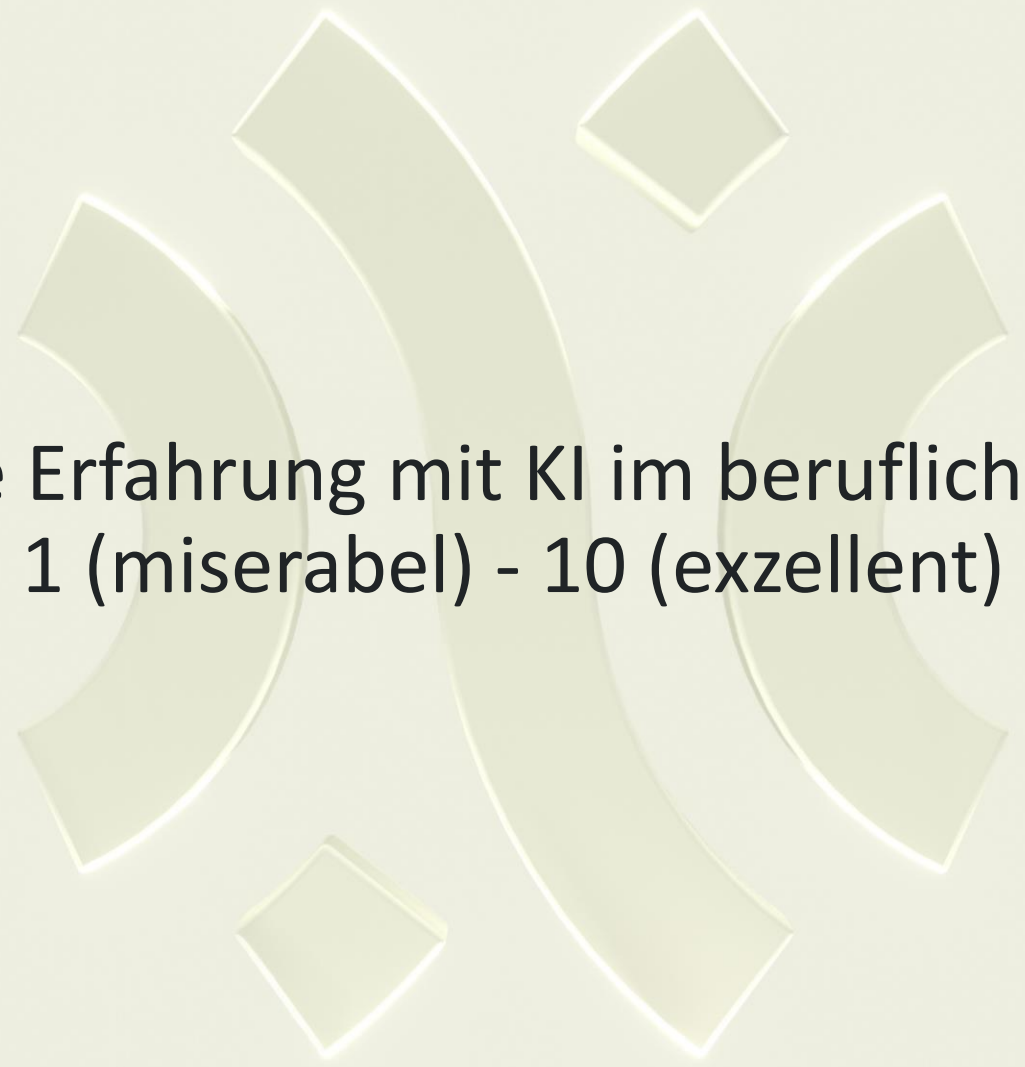




Aus welcher Branche kommen Sie?



Was ist Ihre Erfahrung mit KI im privaten Umfeld?
1 (miserabel) - 10 (exzellent)



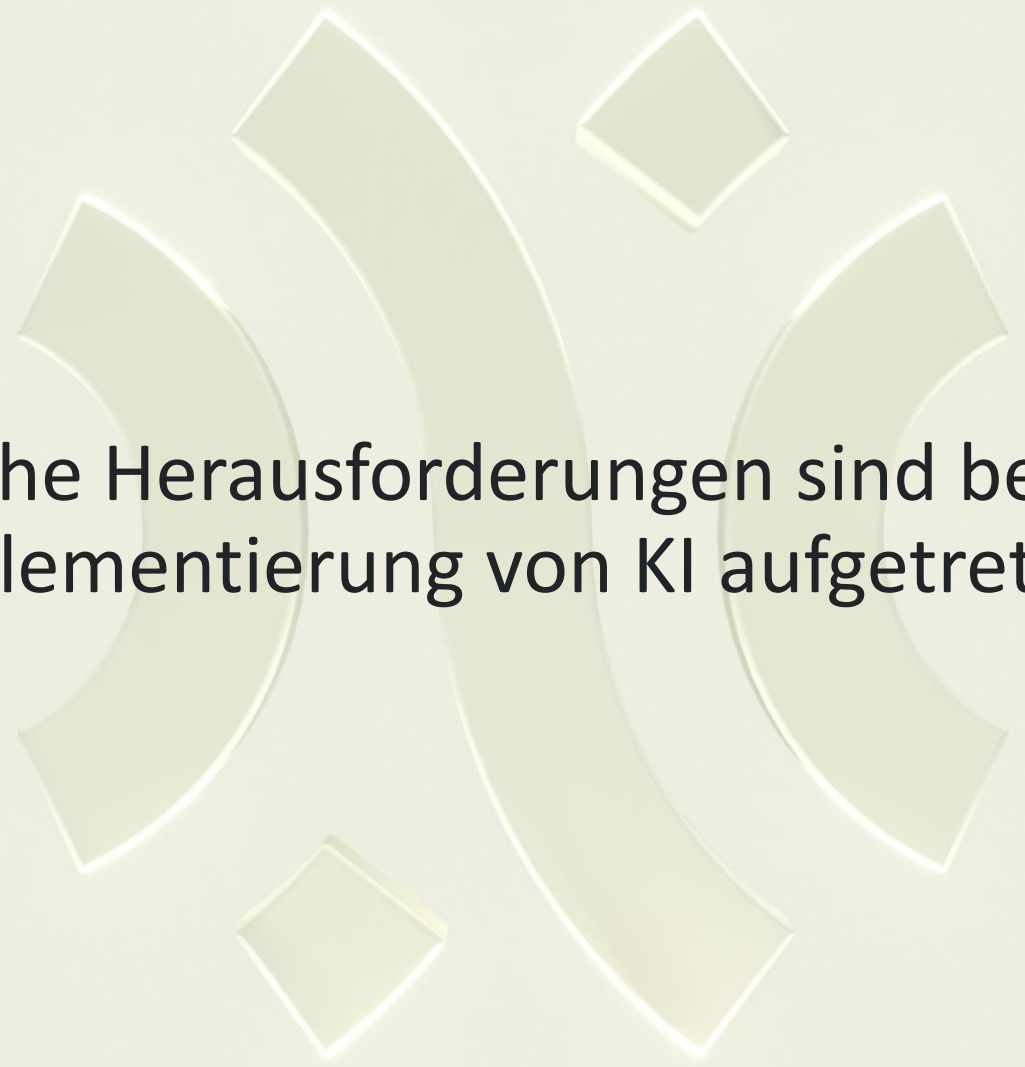
Was ist Ihre Erfahrung mit KI im beruflichen Umfeld?
1 (miserabel) - 10 (exzellent)



Nutzen Sie KI in Ihren Kernprozessen?



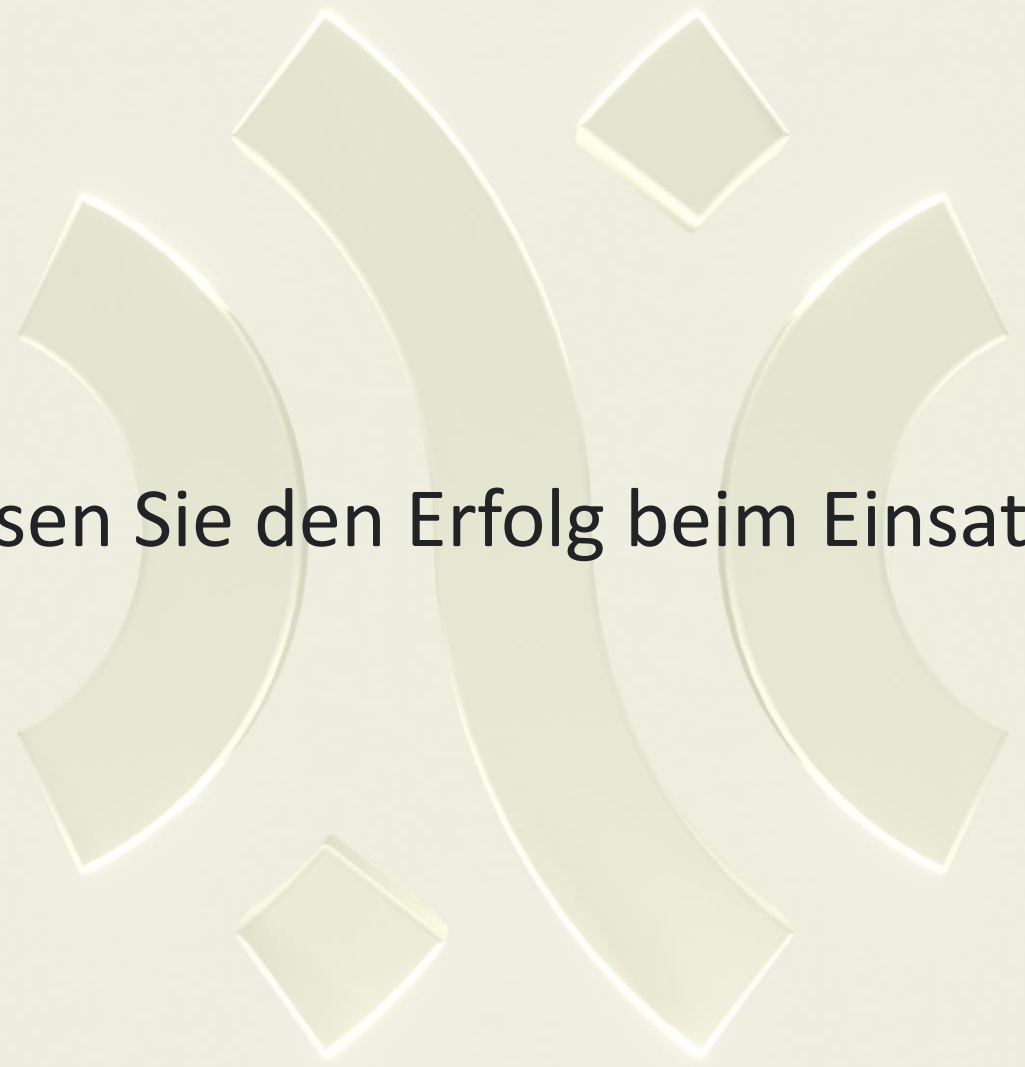
Welche Use Cases haben Sie in Ihrer Organisation identifiziert?



Welche Herausforderungen sind bei der
Implementierung von KI aufgetreten?



Wie adressieren Sie diese Herausforderungen?

The background features a series of concentric, light green arcs and two small diamonds, one at the top and one at the bottom, creating a stylized, abstract design.

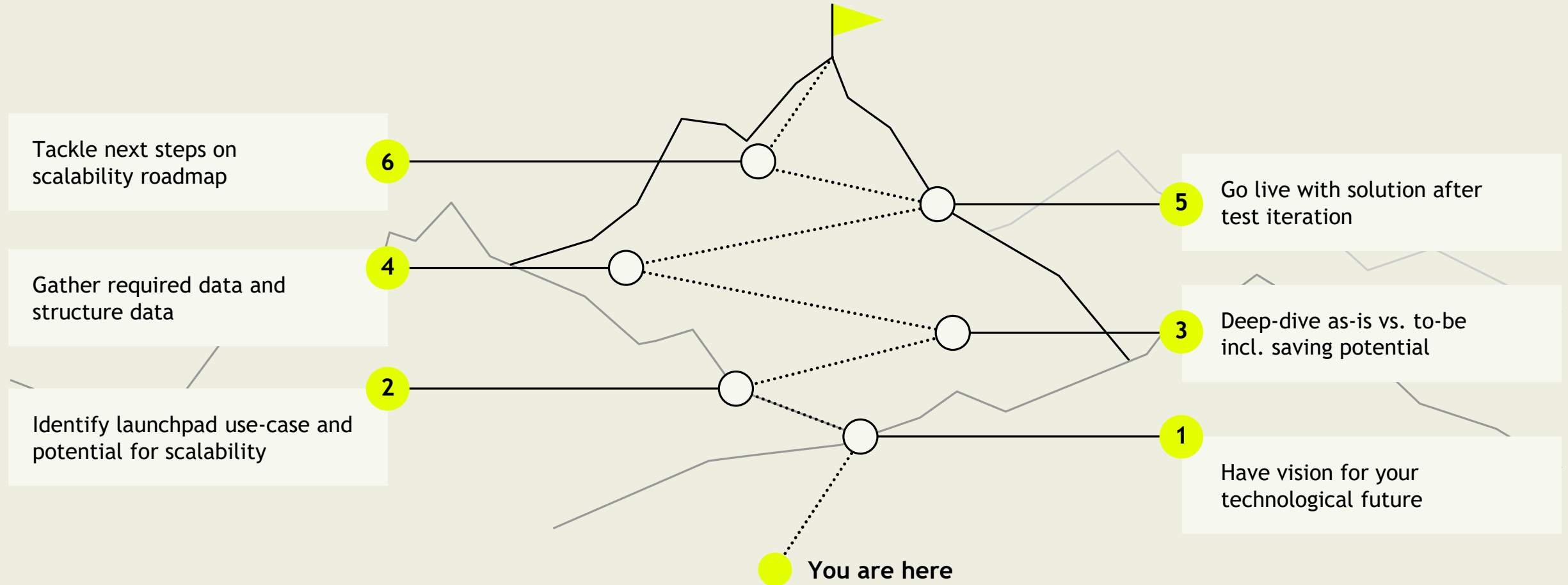
Wie messen Sie den Erfolg beim Einsatz von KI?



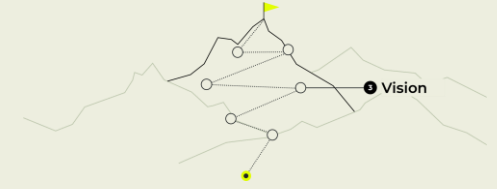
05

Summary

Your core processes can be made **more efficient with higher quality** leveraging latest AI technology ...



Define a clear vision, success criteria and evaluation plan



Value capture in POVs



Thank you!



Andreas Geiss
Vice President Industrial

+49 171 2704732
andreas.geiss@aleph-alpha.com



Aziz Daroui
Senior Solutions Principal

+49 151 21951574
abdelaziz.daroui@aleph-alpha.com



Sophia Eichler
Lead Business Development & Marketing Manager

+49 151 28307815
sophia.eichler@aleph-alpha.com

